



2022-2023 Annual Report



Whats Inside?

04. From the Chair and ED

05. Our Board

06. Our Team

08. Our Mahi In Numbers

10. Kai Avondale

Feed The Streets

Free Guys

Food Together

14. Pātiki Hubs

Rosebank

Eastdale

16. Pātiki Holiday Programme

17. Whanaungatanga

19. Storytelling

24. Words From Our
Community

26. Special Thanks

KIN
AVOND
EST V

From the Chair



Dayne Smith

Chair of the board

Kia orana and talofa lava

When I started I Love Avondale, initially as a Facebook page, in 2014 I never imagined it would grow to become what it is today: a registered charitable trust with several paid staff and dozens of volunteers across a range of initiatives we've created with and for locals.

In the past year, I've been honoured to serve as the interim chair during our transition from a collective of initiatives to a formalised organisation. With our new board now taking shape, I look forward to passing on the torch to someone that will lead I Love Avondale through its next exciting chapter.

Thank you to all our kaimahi on the ground working hard for our community and all the volunteers that help make things tick. You're the real MVPs. Thank you to my fellow board members for volunteering your time to help steer the I Love Avondale waka so that it can continue to represent and serve our community. And a special thank you to Jaclyn who has spent countless hours growing our governance capabilities while managing operations at the same time.

Last but not least, thank you Avondale for supporting us and for being the place I proudly call home.

From the ED



Jaclyn Bonnici

Executive Director, Team Lead

Tēnā koutou katoa

It's been a fast and full year, following a few big years growing 'I Love Avondale' as a project, and latterly formalising as a Charitable Trust. It's my privilege to guide the people delivering this mahi in our neighbourhood. The team's hearts and heads are for the community, and they work with such skill, humour and commitment. Thanks first to them.

Thanks to the board; both our outgoing members, some of whom served in the role for a number of years, and our incoming members who have been a joy to work with. Voluntary boards are the backbone

of organisations like ours; navigating strategic choices and awhiring accountability and sustainability. Thanks too to the students on placement who've joined us on undergraduate and postgraduate practicums; your academic and practical insights into social work and community development have been a gift to us. Thanks to our wider support system – the time and energy you offer as volunteers, the gifts in kind, the encouragement of our collaborators and the funding to enable it all.

And thanks, most of all, to Avondale. Like you, our team love this place and its people – the weird and wonderful, the old and new, the firm and flux.

Our Board



Szening Ooi



Pania Taka-Brown



Bex George



Dayne Smith



Pirie Brown



Sue Thirkettle

Our Team

We have four intertwining strands of mahi; Kai Avondale, Patiki - Eastdale and Rosebank - Hubs, Whanaungatanga and Storytelling. Woven together, these strands are the key offerings of I Love Avondale and our shared kaupapa is 'showing and growing the good in our hood'.



Jaclyn Bonnici
Executive Director, Team Lead



Anne Riley
Kai Avondale Coordinator



Jess Beattie
Patiki Hubs Coordinator



Katy Galo
Storytelling Lead



Ara Alam-Simmons
Diversity Engagement Lead



Cath Bathe-Taylor
Hubs & Youth Support



Sue Thirkettle
Finance Support



Ahutoa Lanefale
Graphic Designer

Regular Contributors

Nia Vavao • Dominique Crawford • Ned Pound • Maison Holani-Williamson • Helena Cocker-Valu



Our Mahi In Numbers

JUL 2022 – JUN 2023

**'Feed the Streets'
community meal**



2600

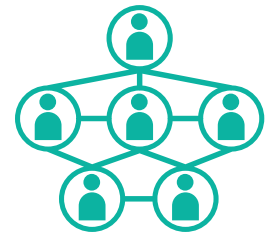
Number of people served a two-course hot meal

**Free Guys
social supermarket**



3500

Number of food parcels gifted to community



4

Umbrella organisation service provided to grassroots community groups



6400

Number of meals served to tamariki at Te Kura o Pātiki Rosebank School Hub Breakfast Club



900

Low-cost, high-quality produce purchased via partnership with social enterprise Foodtogether



200

Diverse community brought together in facilitated workshops, experiences including raranga, bone and stone carving, tapa marking



140

Number of tamariki who took part in our free-to-whānau school holiday programmes



120

Number of people who took part in sports, hauora, training activities at Eastdale Hub



140

Rosebank Hub community participation in whānau drop ins

Social Media



505

Instagram stories



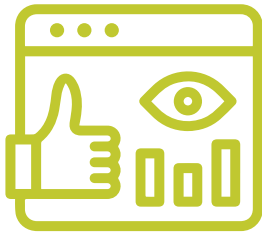
437

Storytelling posts across
Facebook and Instagram



12,200

Facebook, Instagram followers



1,151,297

Impressions (non-unique views)
across all social media channels



159,000

Cumulative reach (unique
people) across all social media
channels



12

Great North
Gallery installations

Kai Avondale - Feed The Streets

Feed the Streets - now in its sixth year - continues to provide kai for those who need it while also deepening relationships amongst people in the community. We try to create a welcoming, non-judgmental environment, full of aroha and manaakitanga. In the past year, our team served over 100 hot, 2-course meals every fortnight. We're back to a largely sit-down dinner, and we provide a takeaway option too. Our volunteers also deliver meals to those who are housebound and/or unable to join us in person.

We are incredibly grateful to our volunteers who keep Feed The Streets going. Our kaitiaki - long term, embedded - and guest volunteers work alongside our coordinator Anne to make this all possible.

Tēnā rawa koutou all of regular supporters and contributors, especially;

- Louise, Tony, Roz, Jo, Aunty P, Lyss, Joyce, Yetta, Miriam, Martina, Nat, Trish, Trudy & Nick
- MC4 Leadership Programme & St Vincent de Paul Avondale Conference
- Haven, Koha Apparel, The Kindness Collective, Taste Cafe & Two Treats



Kai Avondale - Free Guys

Free Guys provides rescued and donated food to over 80 people in the community each week who need a hand up. Testing a social supermarket model, we experienced large lines of people and not enough food to meet demand. Now operating as a food parcel service where people can collect a parcel appropriate to their household, Free Guys has evolved to cater to the needs of the community and respond to what kai is available to share.

Free Guys also supports a number of local organisations that access our services for their clients, including Kāhui Tū Kahā, Anglican Trust Women & Children (ATWC), Catholic Social Services (CSS), Turn Your Life Around (TYLA), Assertive Community Outreach Service (ACOS), NZ Police, Avondale Primary School and Te Kura o Pātiki (Rosebank School).

All our gratitude to volunteers Gin, James, Daniel, Deanna, Dre, Georgie and Anton.



Kai Avondale - Food Together

We have continued building a small, loyal community fresh fruit and vegetable cooperative through a partnership with social enterprise 'Foodtogether'. We're reaching 20-30 local families each week with low-cost, high-quality fresh produce packed by a team of local volunteers led by Haidee. We see the potential for this work to grow, and would love to see locals sharing and swapping from their own gardens - seeds, plants, knowledge.



Avondale CHRISTMAS

FREE • FUN • FOOD • FESTIVITIES

20 22

SATURDAY 10 DECEMBER

AVONDALE COMMUNITY CENTRE AND LIBRARY
93 - 99 ROSEBANK ROAD

4.00PM - 7.00PM • FACE PAINTING • INFLATABLES
CRAFT ACTIVITIES • GOODY BAGS AND MORE

AVONDALE COLLABORATION Local Business Local Community encounter AD

MANAWAKA AO PRESENTS

EVERYDAY SOLIDARITIES

FREE EVENT • FOOD • FILM • MUSIC

SUNDAY 19 FEB • 12.30PM - 4.30PM

HOLLYWOOD CINEMA
20 SAINT GEORGES ROAD, AVONDALE, TĀHAKI MĀKAURAU

PANELISTS
HON MARAMA DAVIDSON • MERVIN SINGHAM
NAIMA ALI • PAX ASSADI • SUVEEN SANIS WALGAMPOLA
GUEST DJ: EMPRESS NAIMA

PANEL DISCUSSION ON STRENGTHENING SOLIDARITIES BETWEEN ETHNIC COMMUNITIES AND TANGĀTA WHENUA FOLLOWED BY THE SCREENING OF WHINA

AVONDALE Quality

ORGANISED BY

FEED THE STREETS I LOVE AVONDALE

FREE COMMUNITY DINNER

SATURDAYS

FORTNIGHTLY | 5.30PM - 7.00PM

AVONDALE COMMUNITY CENTRE
99 ROSEBANK RD

NO DRUGS OR ALCOHOL PERMITTED

FLAX IT WITH NAT ROSE

SAT 7 MAY 2023

1.30PM TO 3.30PM
REGISTRATION ESSENTIAL

BROUGHT TO YOU BY I LOVE AVONDALE

THIRD THURSDAYS

AVONDALE Night Market

IN THE NEIGHBOURHOOD

FOOD STALLS • GUEST DJ'S
ARTISAN MĀKETE

DATES
17 NOV 2022 • 15 DEC 2022 • 19 JAN 2023
16 FEB 2023 • 16 MAR 2023 • 20 APR 2023

HAVEN FOUNDATION • 1855 GREAT NORTH ROAD • 5PM-8PM

BROUGHT TO YOU BY I LOVE AVONDALE

UNITY IN DIVERSITY

25 FEB 2023

PAN AFRICAN COMMUNITY CENTRE • 3PM TO 7PM
3131 GREAT NORTH ROAD, NEW LYNN

BAHA'I FAITH NEW ZEALAND I LOVE AVONDALE

WEST COMMUNITY CONNECTION

FREE WHĀNAU

TURBO TOUCH

FRIDAY NIGHTS

FREE KAI • FREE TO ATTEND • SPOT PRIZES

24 FEB-31 MAR 2023
5.30PM-8PM | EASTDALE RESERVE

FOR MORE INFO: JOSH@TOUCHNZ.CO.NZ • 022 043 1730

TOUCHFIT POLICE netball SPORT

INDIGENOUS CARVING EXPERIENCE

SUNDAY 19 MARCH
10AM TO 5PM

LUNCH PROVIDED
REGISTRATION ESSENTIAL

I LOVE AVONDALE

TAPA MARKING

WITH JASMINE TUIĀ

SATURDAY 27 MAY
10AM - 12PM

LIGHT SNACK • REGISTRATION ESSENTIAL

BROUGHT TO YOU BY I LOVE AVONDALE

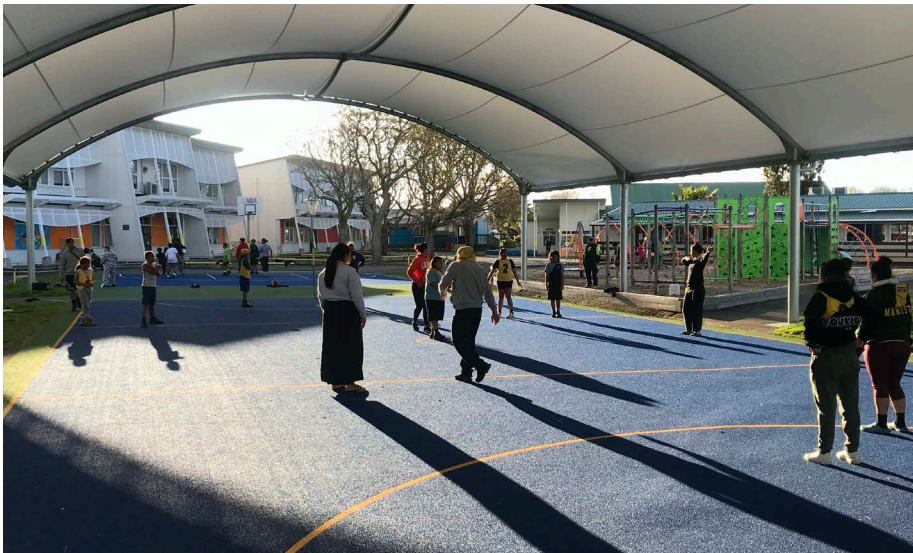


Pātiki Hubs - Rosebank

This year we took on the development of Rosebank Hub, based onsite at Te Kura o Pātiki (Rosebank School). Te Kura recognised the value of the hub but were unable to sustain the coordinator role, so we proactively developed a continuity plan and secured grant funding.

From Rosebank Hub, we serve a hearty breakfast to 40 tamariki, Tuesday-Friday 7:30-9am. "It is extremely important that our tamariki start their day right and with a full tummy and it is rewarding coming in daily seeing how much they value sitting with their peers, enjoying a kai and bonding with one another." Jess Beattie, Pātiki Hubs Coordinator

The Hub is also well used as a whānau drop in and community hang out space. In Term 2, 2023 we launched Chess Club, supported by two lovely local volunteer tutors that join us weekly to support our whānau in their learning. We're enjoying seeing people come together over the chess board; a college student dropping in to play against the tutor, a local Dad keen to learn too so he can play the game with his daughter, a Rosebank student. The decision has been made to move Chess Club to Eastdale Hub, from which it can grow.



Pātiki Hubs - Eastdale

Eastdale Hub - set alongside sports fields, a playground and multiple schools - sits on Auckland Council-owned land. We hold a multi-year community lease on the space and we've invested time and intention into making the Hub functional, safe and inviting for our community.

We run open afternoons, pop-ups and events there ourselves and support others to deliver activities that align with the community's priorities - e.g.

- Partnering with Touch NZ in Term 1, 2023 to deliver a sports module as part of 'Igniting Potential In Rangatahi'. Over the course of six weeks we hosted training and games for 30 tamariki every Friday afternoon.
- Responding to community requests for basketball training and games by hosting a basketball module at neighbouring Avondale Intermediate.
- Piloting weekly wāhine strength training sessions in response to a local mum seeking free exercise opportunities for mums and their daughters. The workout series is guided by Te Whare Tapa Wha with tinana nurtured, hinengaro strengthened, wairua protected and whānau respected.

"The strength training mahi has helped wāhine find hope, connections and sense of community"

- Jess Beattie, Pātiki Hubs Coordinator



Pātiki Holiday Programme

Our Pātiki Holiday Programmes - free to the community, and co-sponsored by Whau Pasifika Trust - have achieved strong bonds between local tamariki from Te Kura o Pātiki, Avondale Primary School and our team. For one week every term break, and two weeks in the summer holidays, our tamariki have enjoyed being together, trying new things, being aw'hī'd and respected. We focus on positive group dynamics, consistency, and the joy of learning.

We have achieved an environment which supports and guides young people in a safe space for them, and have exposed them to new skills and experiences. Thanks to our guest facilitators including local chefs, artists, Volleyball NZ, the Re-Creators, Junky Munkys, Whau River Catchment Trust and more. Shout out to local businesses Ol' Mate, First Scene, Magic Loft and Hollywood who have come to the table offering opportunities our tamariki might not have otherwise.



Whanaungatanga

Our whanaungatanga work is about fostering meaningful, purposeful relationships. Whilst relationship building happens throughout all of our mahi, we also have specific expressions of whanaungatanga, which we frame as connection, collaboration and advocacy.

Connection

Our Diversity Engagement Lead focuses on creating shared space for tangata whenua and diverse whānau, tau iwi people of colour. This work aims to increase people's sense of belonging, understanding and social cohesion. In the past year we supported The International Sisterhood to form and meet weekly to connect, chat and share kai with each other. Women who've settled in Aotearoa New Zealand from across the world, came together to be themselves, their different and shared experiences celebrated. We also curated a series of well attended creative, hauora workshops; group experiences for migrant and former refugee women, Māori, Pasifika, African, Central and South Asian peoples.

"My work is focused on increasing the recognition and resonance between Māori and Pasifika and migrants and resettled peoples; cultures, languages, protocol, ways of understanding the world"
- Ara Alam-Simmons, Diversity Engagement Lead

Collaboration

We join up with locals - individuals and organisations - to work together to deliver projects. This year we teamed up with Mainstreet - Avondale Business Association - to host a series of night markets, 'Third Thursdays'. These events featured DJs, māketē stallholders, food trucks and more, and brought together hundreds of people each time with a low-key community vibe.

Another example of our collaborative mahi is coordinating and supporting the Whau Youth Board and facilitating the Whau Youth Provider's Network.

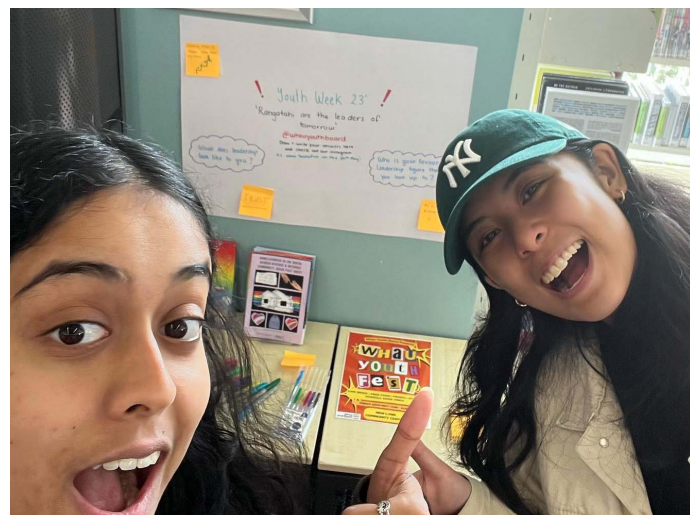


Advocacy

We engage with key local stakeholders and decision makers including Auckland Transport, Eke Panuku and Kāinga Ora. In the past year we have shared local concerns and ambitions on a number of issues including;

- the continued decline of the existing Avondale Community Centre, and the impact it's having on local users, like us for our fortnightly community meal Feed the Streets
- the importance of accelerating a strong outcome for the anticipated new Avondale community hub (centre and library), 'Te Hono'
- the need to improve road safety on Rosebank Road outside Te Kura o Pātiki Rosebank School
- the sustainability of Kai Avondale as demand for food relief grows in the context of cost of living crises and high volumes of private and public housing developments

We also joined the broad-based alliance Te Ohu Whakawhanaunga Tāmaki Makaurau. The alliance is made up of over 40 faith, union and community-based organisations and provides a place for community organising skills to be taught, shared, and developed to build people power. Te Ohu is about people standing up as civil society leaders to negotiate with decision-makers. We hope that through Te Ohu we can contribute to the systemic and structural change needed for our communities to thrive.



Storytelling

I Love Avondale uses storytelling as a means to celebrate our people and places, promote local initiatives and events, keep our community aware and informed, and encourage people to participate locally. Four main storytelling projects complement the news and stories we share. Old Avondale acknowledges our community's past, Fresh Perspective puts the camera and pen in the hands of the community to capture our neighbourhood from their perspective, People of Avondale tells the stories of people who live, work, study and play in our neighbourhood and Great North Gallery is a series of 12 posters in our main street that we use to showcase Avondale's people and places, cultures and creativity and refresh monthly. This Gallery is fully funded by Eke Panuku, to whom we're grateful for their ongoing support.

Through our various storytelling projects we've provided a platform for local creatives - including many younger people - to express themselves and get paid doing it. For instance, we've been growing the outreach of Reel Life - videos shot and edited by locals that capture and preserve everyday Avondale. All of our storytelling initiatives aim to help record what Avondale was like at different moments in time for future generations.



Storytelling

People of Avondale



Storytelling

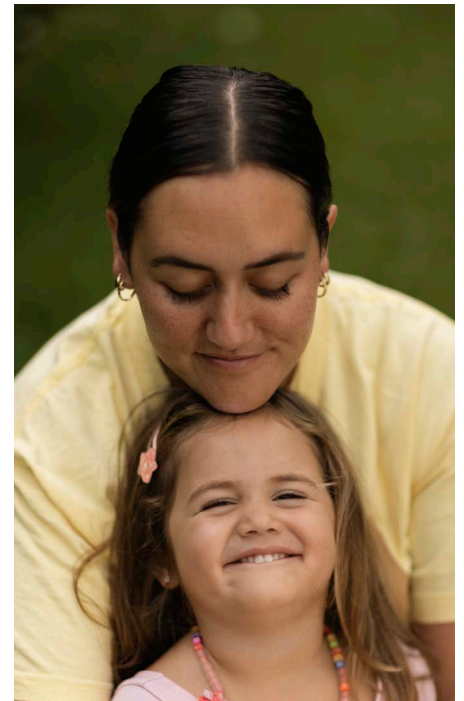
Mother's Day Special

The women were asked what Motherhood means to them and the answers were all so different from each other, and yet so relatable for many;

"As I started meeting and photographing the families you'll see in these portraits, I became very aware of the lifelines entwined into Avondale. Generations of families have walked the paths of this land, creating an intricate web of stories, lifetimes and legacies. I enjoyed witnessing the anchor Avondale has provided to the families that inhabit this space. Every inch of this place is alive and drips history. Avondale is more than a suburb or neighbourhood; it is home to opportunity and connection while being a thriving hub of diverse heritage and culture. What a beautiful place to call home."

- Abhi Chinniah, I Love Avondale guest documentarian

Rest in Love, Simone



Storytelling

Old Avondale



Hangi for sale: Ans Westra



Atlantic: K E Niven & Co of Wellington. Ref: 1/2-221041-F Alexander Turnbull Library.



1971 Avondale Collage junior basketball team: Rosie Russell



Auckland Libraries Heritage Collections 273-HAR049-12

Storytelling

Great North Gallery

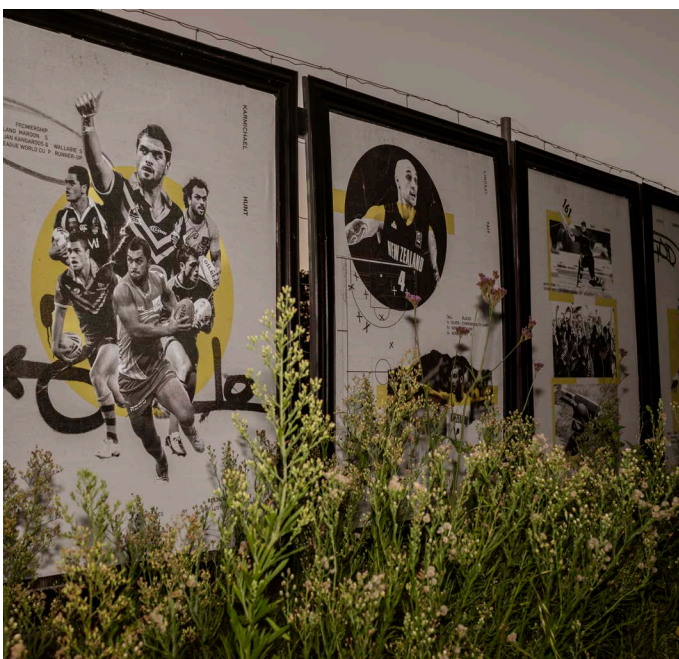
Great North Gallery captured by Matthew Lewis and Nia Vavao.



Series by: Sam Craigie



Series by: Temukisa Setu



Series by: Dayne Smith x Matt Miller



Series by: Alex Scott Illustration

Storytelling

Fresh Perspective



Image by: Jake Ekin

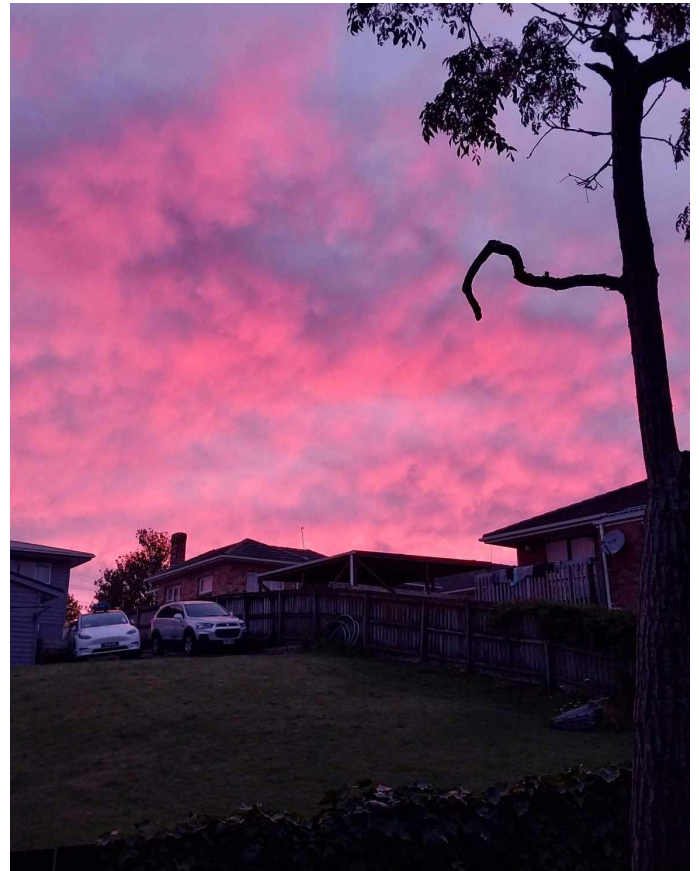


Image by: Daniel Telders



Image by: May Taito



Image by: Patrick Kulatea

Words From Our community

"Thank you for always caring"

"Thank you for making Free Guys a rewarding place to volunteer"

"The Patiki Hubs programmes and workshops in our community offer togetherness, learning skills, being active, meeting people and experiences. We appreciate all the mahi our Jess has done for us as a whānau as well as for our community."

"I have had the opportunity to train within the free wāhine workouts on a Thursday. My whole Te Whare Tapa Wha is much better for it. These sessions created a sense of belonging for me personally - it's an awesome way to meet wahine on similar health journeys. I feel much more connected to my community. Appreciate the mahi you do for Avondale Jess! You are AMAZING."

"I love the genuine kindness and thought that your work has created to support our community in so many different ways"

"From the bottom up, for us with us, always thinking ahead, that's I Love Avondale"

"This group touches the whole community & brings it together for the benefit of all. The work they do is immeasurable & is the thread that has bought the community closer! Avondale pride"





“Respect for the community as it is rather than trying to change it, just make it better for those who reside in it”

“I love the kaupapa – the grassroots tautoko and kōrero that’s threaded in all spaces. I’ve loved the connections I’ve formed with my Avondale community”

“I feel really peaceful here. People really care about me and I can share”

“I have made a couple of friends and it’s really encouraged me to get involved in the community too”

“Seeing these perspectives from our own locals are part of the reason our identity sinks hard into 828. The culture and community have always been here”

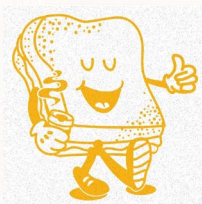
“Love this series (Old Avondale), having lived in Avondale for 50 years myself, I’ve seen many changes...many happy memories have been evoked with the reading of posts on this page”

“Thanks for adding to the fabric of Avondale as the Great North Road Gallery is one of my favourite things in the 828!”

“I really admire the I Love Avondale posts, you do such an amazing job for our community. It’s always beautiful and positive, and you deal with differing opinions with such grace...I love living here, 15 years now, and it’s been incredible to watch groups like I Love Avondale create such a positive neighbourhood”

Special Thanks

Our mahi in, for and by Avondale is made possible by a number of supporters. Thank you all for your investments;



Photographer credits

Nia Vavao, Abhi Chinniah, Helena Cocker-Valu, Matthew Lewis, May Taito, Jake Ekin, Daniel Telders, Patrick Kulatea, Eke Panuku

And thanks too to all of you who've made a personal donation. Large or small - your contributions mean a lot to us.



